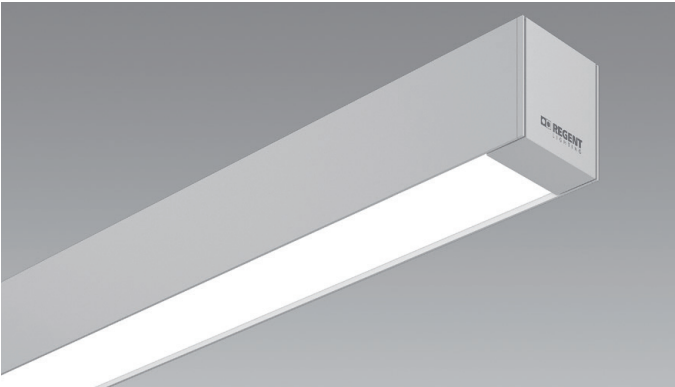


CHOICE OF OPTICS. THE RIGHT LIGHT WHATEVER YOUR REQUIREMENTS.

CHANNEL, THE CLASSIC AMONG ROW LIGHTING SYSTEMS, IS NOW AVAILABLE IN AN EVEN MORE STREAMLINED VERSION. AVAILABLE AS AN INDIVIDUAL LUMINAIRE AND AS A CHANNEL LIGHTING SYSTEM, IT INTEGRATES ITSELF ELEGANTLY INTO THE ARCHITECTURE AND IMPRESSES THROUGH HIGH ENERGY EFFICIENCY.MEETING ALL STANDARDS THAT APPLY FOR WORKPLACE LIGHTING – WITHOUT COMPROMISE.



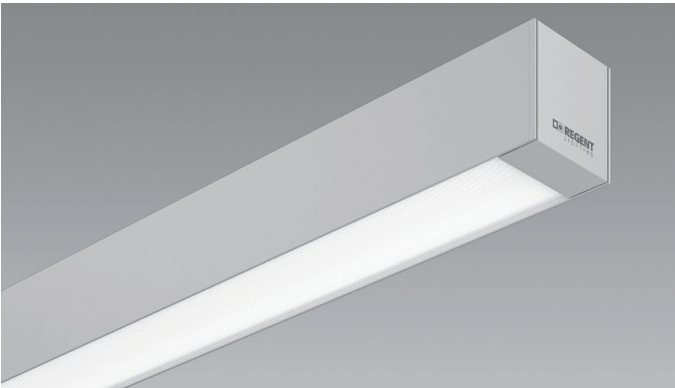
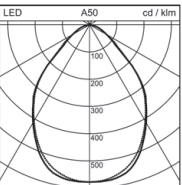
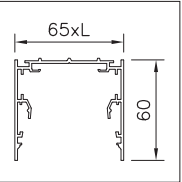
CHANNEL S C-LED

EXCEPTIONAL GLARE CONTROL

3000 K, 4000 K, 2700–6500 K

UGR ≤ 19, L_{max} ≤ 3000 cd/m²

Up to 1800 lm/1,2 m, 90 lm/W

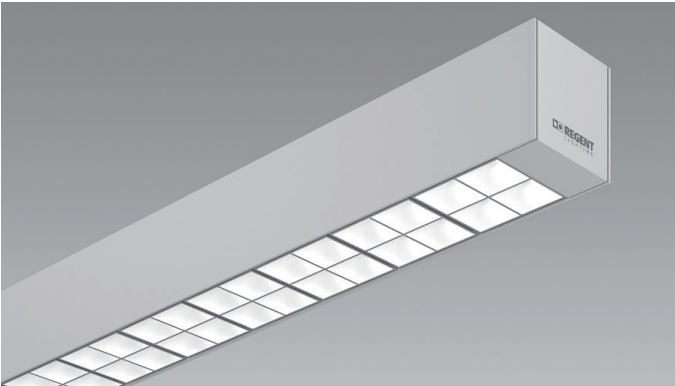
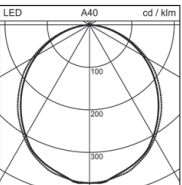
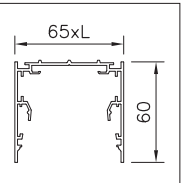


CHANNEL S LED

ESPECIALLY ATTRACTIVE

3000 K, 4000 K, 2700–6500 K

Up to 2700 lm/1,2 m, 107 lm/W



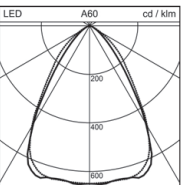
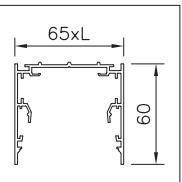
CHANNEL S BOOST LED

HIGHLY EFFICIENT

3000 K, 4000 K

UGR ≤ 19, L_{max} ≤ 3000 cd/m²

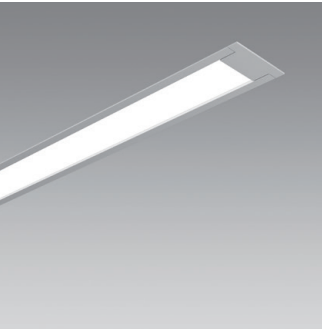
Up to 4100 lm/1,2 m, 103 lm/W



CHANNEL S RANGE

SINGLE LUMINAIRE C-LED, LED AND BOOST

COMPLETELY PRE-ASSEMBLED



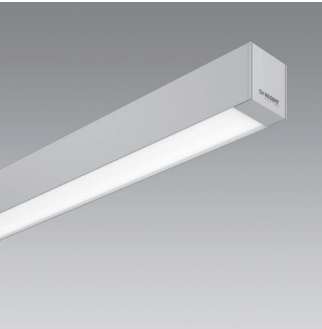
CEILING RECESSED WITH TRIM

Length

667 mm

1267 mm

1567 mm



MOUNTING OR CEILING RECESSED WITHOUT TRIM

(can be pendant or recessed
with accessories)

Length

650 mm

1250 mm

1550 mm

CHANNEL LIGHTING SYSTEM

MOUNTING ACCESSORIES TO BE ORDERED SEPARATELY

SUPPORT PROFILE WITH OR WITHOUT CEILING RECESSED

(with trim for ceiling recessed, without trim for mounting or ceiling recessed, can be pendant or recessed with accessories)

1 INITIAL/END SUPPORT PROFILE

Power connection to be provided on initial profile

2425 mm, 3025 mm or 4525 mm

SUPPORT PROFILE FOR SINGLE MOUNTING
Must be equipped with a batten or blind cover

2450 mm, 3050 mm or 4550 mm

2 CENTRAL SUPPORT PROFILE

2400 mm, 3600 mm or 4500 mm

SYSTEM BATTEN

3 SYSTEM BATTEN

3000 mm, 1500 mm, 1200 mm, 600 mm, 300 mm
(for all optics)

250 mm, 200 mm, 150 mm, 100 mm, 50 mm
(for C-LED and LED)

OPTICS

4 DIFFUSER CHANNEL S C-LED INITIAL/END MODULE

2408 mm, 3008 mm or 4508 mm

5 DIFFUSER CHANNEL S C-LED CENTRAL

2400 mm, 3000 mm or 4500 mm

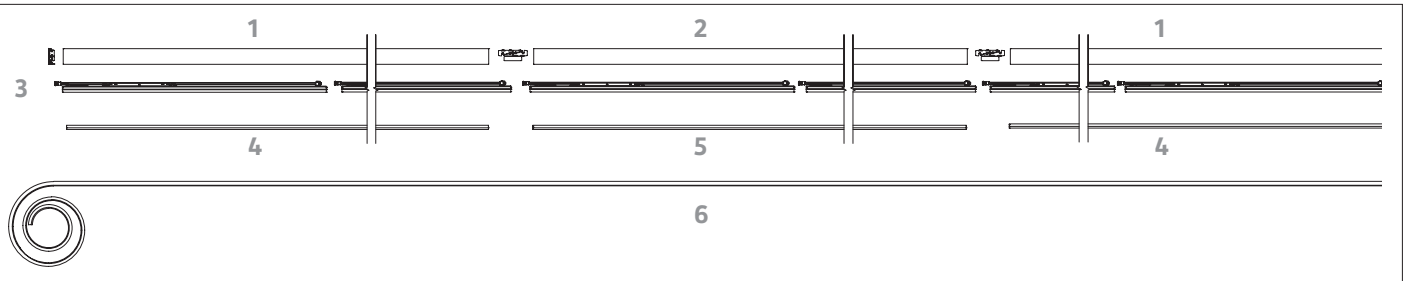
6 DIFFUSER CHANNEL S LED

With RUN Technology, rollable, can be shortened on site

2400 mm, 4500 mm, 7200 mm or 24'000 mm

LOUVRE CHANNEL S BOOST LED

No additional optics necessary, louvres pre-installed
on batten



For further information please visit www.regent.ch/channel-s

Regent Beleuchtungskörper AG Dornacherstrasse 390 Postfach 139 CH-4018 Basel
T +41 61 335 51 11 F +41 61 335 52 01 info.bs@regent.ch www.regent.ch

Subject to technical modifications.
Regent assumes no liability for printing errors.
Edition 1, July 2019



536539.EN

CHANNELS

ADAPTABILITY IN PERFECTION



CHANNEL S. PERFECTLY CONCEIVED DOWN TO THE LAST CENTIMETRE.



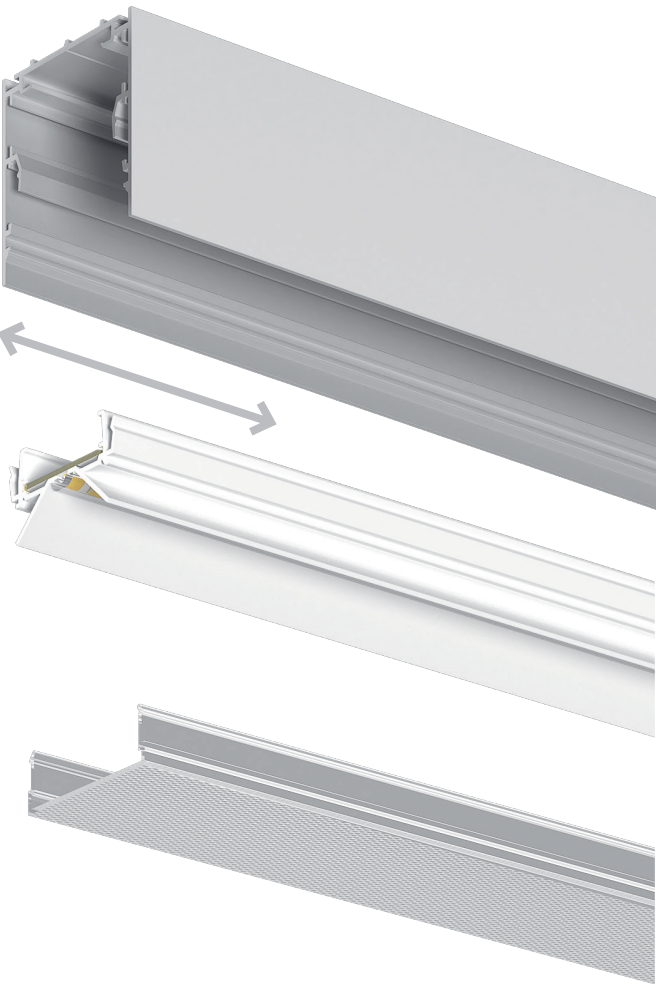
CAN BE PLANNED TO THE EXACT CM

The length of the complete system can be defined to the exact cm (with optics for Channel S LED and Channel S C-LED)

Profile, roll-up diffuser (optics Channel S LED) and micro-prismatic optics (Channel S C-LED) can be cut to the desired size on site

Through the combination of LED inserts in various lengths (from max. 3 m to min. 5 cm) batten luminaires in any length can be created in steps of 5 cm

Expansion compensation at the ends allows a clean closure of the light line



C-LED

Microprismatic C-LED optics

Optimum glare control for standard-compliant office lighting



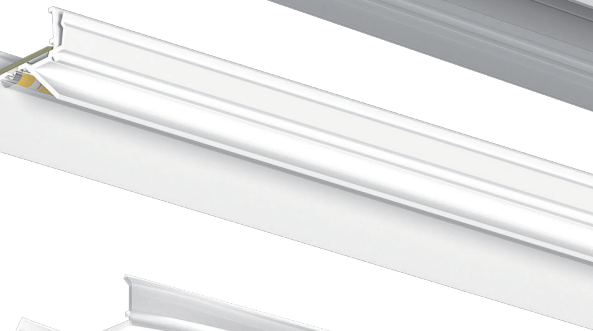
LED

Rollable diffusor with RUN Technology

Can be shortened on site

Especially attractive

Shadow-free, continuous lines of light of up to 24 m



VARIOUS MOUNTING OPTIONS

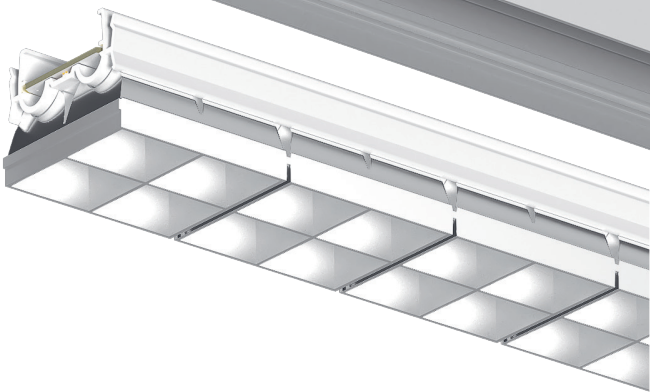
Recessed ceiling, ceiling and wall mounted, pendant mounting

EFFICIENT

Efficient optics and high luminous flux reduce energy consumption and lower overall costs for the lighting system in the long run

Failure rate limited to an absolute minimum and extremely low maintenance costs thanks to long lifespan

Maximum ergonomics for the user



BOOST LED

Aesthetically pleasing louvre optics, optimised for application with LEDs

Extremely efficient

Each of the light-emitting diodes is fitted with its own optics to allow precise control of the light.

The colour tolerance of 2 SDCM (MacAdam) guarantees visual uniformity between two lenses or two luminaires.

ALSO AVAILABLE AS TUNABLE VERSION

Colour temperature can be adjusted to enhance the user's feeling of well-being

Stepless change between warm white and cool white light

2700 K

6500 K

SIMPLE TO INSTALL

Throughwiring in the system pre-mounted on the batten

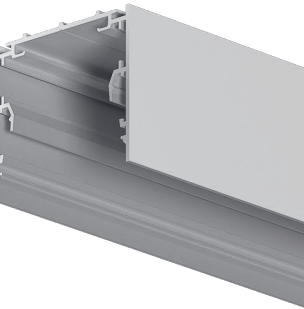
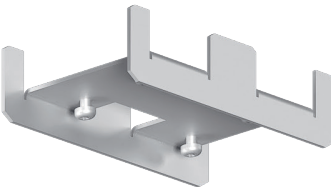
Reduced installation costs

Rectangular canopy (optional)

System battens individually exchangeable on site

VARIABLE

Available as an individual or system luminaire



TECHNICAL DATA

Luminous efficacy: up to 107 lm/W

Glare control: up to UGR ≤ 19, L_{max} ≤ 3000 cd/m²

Colour temperatures: 4000 K, 3000 K, 2700–6500 K

Colour rendering: CRI ≥ 80

Maintained luminous flux: L80 50'000 h

Choice of three optical systems for a wide variety of applications

Suitable for emergency lighting

Dimmable digital DALI

MOUNTING ACCESSORIES

Pendant suspension, canopy, connection cable for pendant mounting, installation bracket set, fixing clamp for uneven ceilings