

# HermanMiller

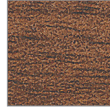
## Civic Tables colour choices



### Melamine worksurface finishes



Charcoal Ash  
I4



Natural Walnut  
RY



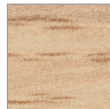
Smoke Cherry  
I3



Havana Cherry  
OC



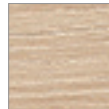
Halifax Oak  
HFK



Napoli Oak  
OB



White Halifax Oak  
WFK



Light Acacia  
L2C



Graphite  
G1



Onyx Grey  
ONG



Fjord  
FJD



Folkstone Grey  
8Q



Denim Blue  
DEN



Soft White  
LU

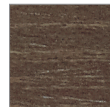


Chalk White  
X1

### Veneer top finishes



Walnut open grain  
OUG



Walnut on Ash  
EV



Oak open grain  
OKG



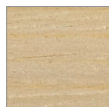
Oak on Ash  
EU



\* White American Oak  
NOK



Maple open grain  
Z5G



Clear on Ash  
ET

\*NOK is the same veneer as the naughtone Oak finish

**Laminate  
top finishes**



Nero Ingo  
FX1



Grigio Antrim  
FX4

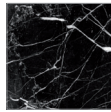


Grigio Efeso  
FX3

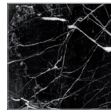


Bianco KOS  
FX2

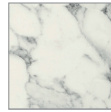
**Marble  
top finishes**



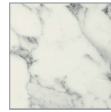
Nero Marquinira gloss  
NMG



Nero Marquinira matt  
NMM



White Carrara gloss  
WCG



White Carrara matt  
WCM

**Lino  
top finishes**



Charcoal  
FL1



Smokey Blue  
FL4



Ash  
FL2



Mushroom  
FX3

**Base  
finishes**



Black  
BK



Graphite  
G1



Folkstone Grey  
8Q



Chalk White  
X1

**Foot  
finishes**



Black  
BK



Graphite  
G1



Folkstone Grey  
8Q



Chalk White  
X1



Polished Aluminium  
CD

For more information, please visit [hermanmiller.com](http://hermanmiller.com) or call +44 1225 794000.