

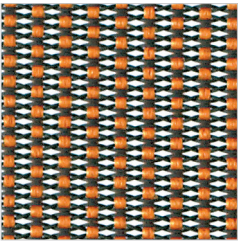
HermanMiller
Setu™ colour choices



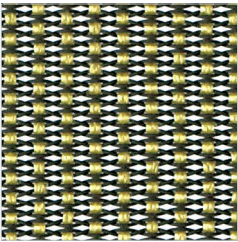
Setu



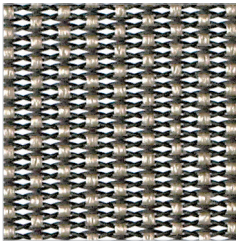
Seat & Back
Lyris 2 suspension



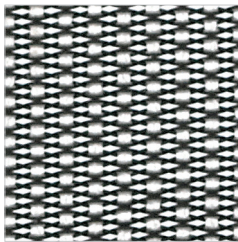
Mango
4W22
Price Band 0



Chartreuse
4W23
Price Band 0

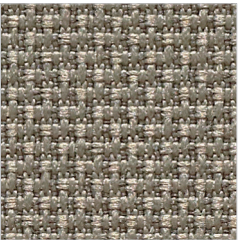


Chino
4W28
Price Band 0

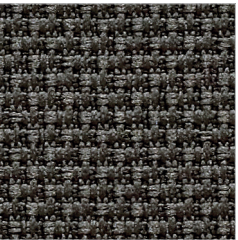


Alpine
4W21
Price Band 0

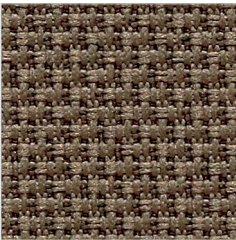
Upholstered Seat & Back
Options



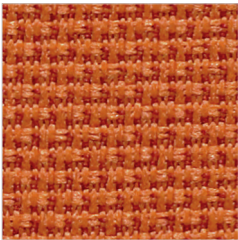
Crossing
Price Band 1
22 Colours



Crossing
Price Band 1
22 Colours

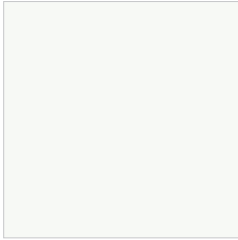


Crossing
Price Band 1
22 Colours



Crossing
Price Band 1
22 Colours

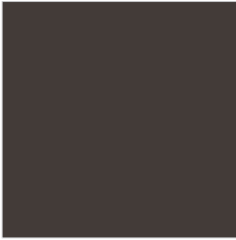
Frame and Arm
Finish



Studio White
98



Chino
JH



Java
5B



Slate Grey
SG

Base/Linkage
Finish



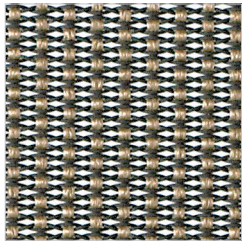
Semi-Polished/H-Alloy
5Y



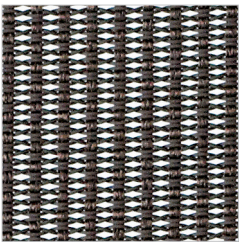
H-Alloy/H-Alloy
L7



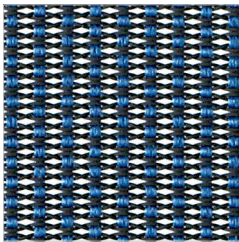
Graphite/Graphite
G1



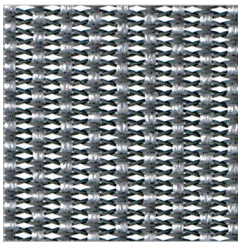
Rattan
4W29
Price Band 0



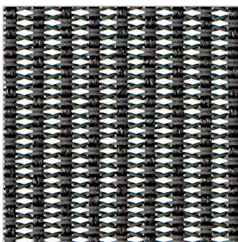
Java
4W30
Price Band 0



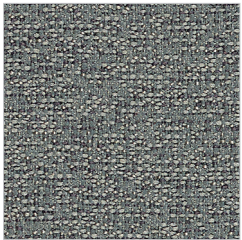
Berry Blue
4W25
Price Band 0



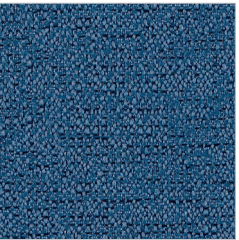
Slate Grey
4W26
Price Band 0



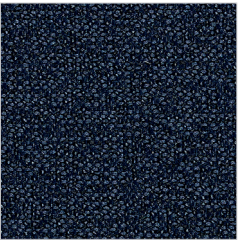
Graphite
4W31
Price Band 0



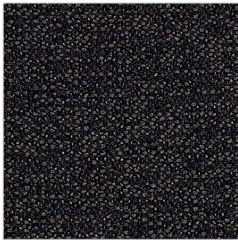
Twist
Price Band 2
21 Colours



Twist
Price Band 2
21 Colours



Twist
Price Band 2
21 Colours



Twist
Price Band 2
21 Colours



Graphite
G1

Setu® Chair

Care and Maintenance

With regular care and maintenance, your Herman Miller Setu Chair will provide many years of superior performance and satisfaction. To maintain the quality of your Herman Miller product, please follow the cleaning procedures outlined here.

Base, Frame, Kinematic Spine™, and Arms
Normal Cleaning

Wash surface with a soft cloth soaked in mild detergent and warm water.

Rinse thoroughly and dry with a soft cloth.

Do not use solvents or abrasive kitchen cleaners.

Upholstery
Normal Cleaning

Vacuum fabric as needed using an upholstery attachment.

Vacuuming picks up dust and reduces the need for professional cleaning.

Do not brush fabric or use a vacuum attachment with a rotary brush.

Brushing may permanently damage the nap or change the character of the fabric.

Lyris 2™ Suspension Material

Composition:
Copolyester 75%, Polyester 25%

Application:
Weight: 37g/square foot
Price Band 0

Standards:
Flammability: CA TB 117, NFPA 260
Light Fastness: Grade 4, 40 hours
Abrasion Resistance: Wyzenbeek, 60,000 double rubs

Twist

Composition:
Antimony-free Polyester 80%, Recycled Polyester 13%, Polyester 7%

Application:
Width: 137cm
Weight: 15 ounces/linear yard
Price Band 2

Standards:
Flammability: CA TB 117, NFPA 260, ASTM E 84
Light Fastness: Grade 4, 40 hours
Abrasion Resistance: Wyzenbeek, 60,000 double rubs

Crossing

Composition:
Antimony-free Polyester 87%, Recycled Polyester 13%

Application:
Width: 137cm
Weight: 12.9 ounces/linear yard
Price Band 1

Standards:
Flammability: CA TB 117, NFPA 260, ASTM E 84
Light Fastness: Grade 4, 40 hours
Abrasion Resistance: Wyzenbeek, 60,000 double rubs

For more information, please visit hermanmiller.com or call +44 (0)845 226 7201.